

DSP406II Wall Mount Speaker



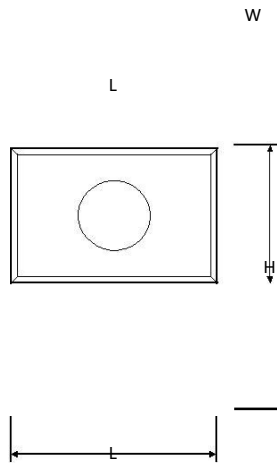
Features

- Sounds clear and sonorousness;
- Top wire adopts integrated design,elegant clever and beautiful;
- Enclosure made of high quality fiberboard and birch cold-press leather manufacturing, eliminate resonant sound box, suitable for indoor;
- Input voltage 70V-100V, adapt different public broadcast line

Specification

Speaker unit	4.5"×1
Power rating	10W
Voltage	70V/100V
Sensitivity (1m,1W)	91±2dB
Max. SPL(1m)	99±2dB
Effective Freq. Range	80Hz-18kHz
Product size(L×W×H)	302×115×205mm
Product weight	2.25kg

Installation



The unit: mm

size	Length	Width	Height
Model			
DSP406 II	302	115	205

Installation

The unit: mm

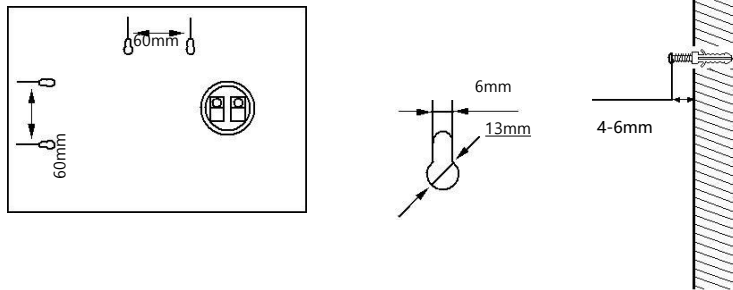


Figure 1

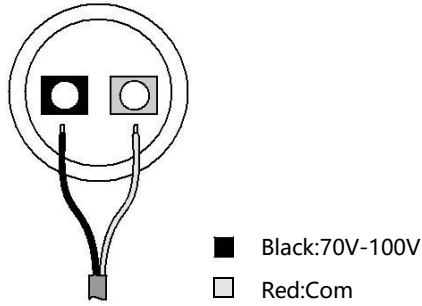


Figure 2

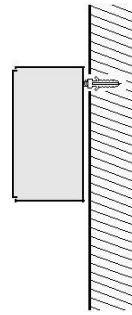


Figure 3

- ① Fit two $\varnothing 4$ mm nail on wall where it is needed to install a speaker system as shown above;
- ② Connect audio broadcasting wire to the terminals according to the table below.

Power	Line Voltage	Line Voltage	
		70V	100V
Terminals			
Red-Black		5W	10W

- ③ Position the speaker, then adjust the direction of it and examine whether it is steady.