

# DSP3610

## Ceiling Speaker



### *Description*

The DSP3610 is a ceiling speaker with a 70V/100V transformer built in. The 70V/100V transmission is realized in a high-voltage, low-current mode, which makes longer distance transmission and parallel connection of multiple loudspeakers possible.

The built-in 6.5" speaker driver is designed of wide frequency response 65-20,000Hz, the multiple terminals can be applied to different occasions vary in area sizes and background noises; It is made of high quality engineering plastic, which ensures long-term durability, and will never be out of shape or fading; Spring clip clamp makes the easy and secure installation; Driver surround excellent damping, long life, clear and sonorous sound.

It is an ideal choice for industrial and commercial applications in hotel, school, office and factory where background music and paging is needed.

## *Features*

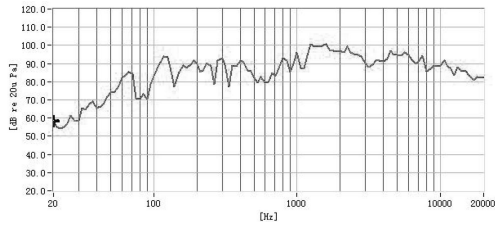
- Adopt fashionable rounded edges and carbon alloy aluminum mesh with RAL white coating so as to integrate with any indoors perfectly.
- Equipped with 6.5" full-range loudspeaker with magnetic circuit encapsulated with special engineering plastic process, and the drum paper formed with tripping and hot pressing of algae salved organisms, for super-strong reproduction of voice and music.
- In compliance with IEC268-5 PHC standard, it can work continuously for 100 hours and carry out SAFE test under the rated power, and can bear twice rated power in a short time, which ensures the reliability of the speaker under extreme conditions, extends service life and greatly reduces the chance of failures or performance degradation.

## *Specifications*

<b>Model</b>	<b>DSP3610</b>
<b>Unit Driver</b>	6.5"×1
<b>RMS</b>	6W
<b>MAX. POWER</b>	10W
<b>Rated Input</b>	70/100V
<b>Sensitivity (1m, 1W)</b>	90dB±2dB
<b>MAX. SPL. (1m)</b>	98dB±2dB
<b>Freq. Resp.</b>	<b>65Hz-20kHz</b>
<b>Mounting Hole</b>	ø165-ø170mm
<b>Dimension</b>	70mm×186mm
<b>Weight</b>	0.66kg

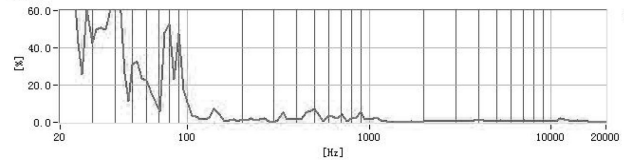
### FREQ. RESPONSE

(dB SPL, 1W, 1m)

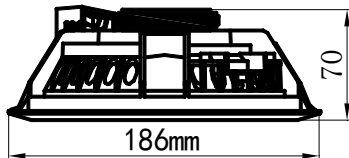


### DISTORTION

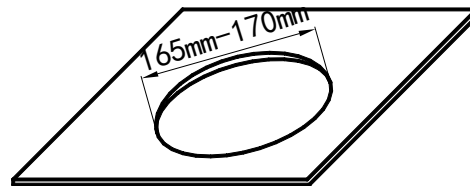
(THD < 1.5% 1W, 1m, 100Hz-10kHz)



### DIMENSIONS



### MOUNTING HOLE



## Installation

1. Cut a mounting hole on the ceiling with a diameter of 165-170mm (as shown above)
2. Adjust the clamps of the speaker based on different ply of ceiling.
3. Connect audio broadcasting wire to the terminals according to the table below.

Power Terminals	Line Voltage	70V	100V
Black---Blue		3W	6 W
Black--- White		6W	10W*

Note: The “10W\*” is the MAX power of the speaker. If you connect this line to work for a long time, it might have damage to the speaker.

4. Turn up the clamps of the speaker and insert them into the mounting hole on ceiling and then release them as shown below. (It is recommended to wear your working gloves for safety.)



5. Finally, check that it is secure and steady.