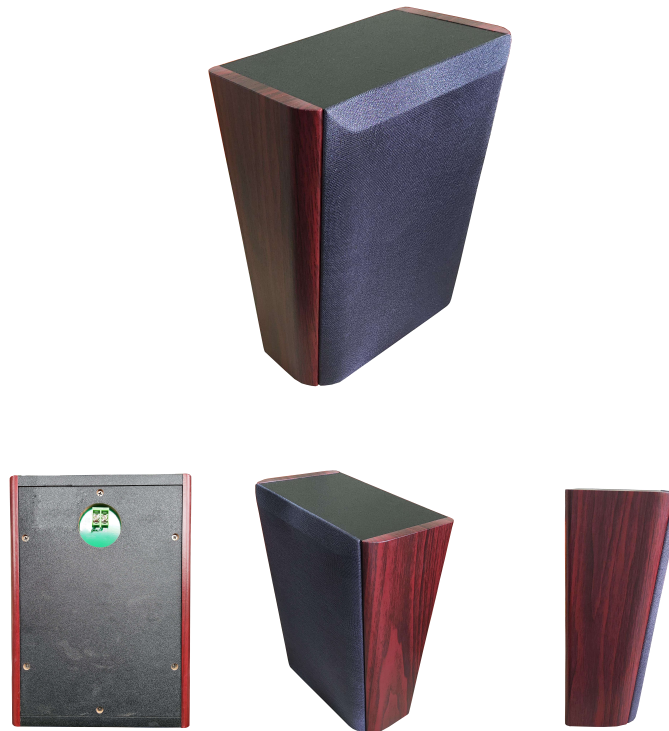


MAG6107L

30W Network Indoor Slave Speaker



Description

The MAG6107L is a 30W indoor slave speaker with a 2" treble and 5" bass. It boasts a clear and bright sound, with minimal vibration and a sound pressure level of up to 104 ± 2 dB. This speaker is designed to work with the MAG6107CVG master speaker and is ideal for use indoors..

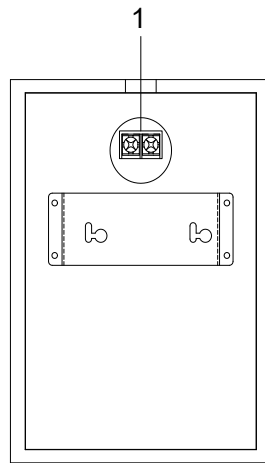
Features

- Made of high-quality fiberboard, with small vibration and clear, bright sound;
- Chassis with wall-mounted hole piece for easy installation;
- Rated impedance 4Ω , rated power 30W;
- Sensitivity 90 ± 2 dB, maximum sound pressure level 104 ± 2 dB, effective frequency range 105Hz-20kHz.

Specifications

	Model	MAG6107L
Acoustic System	Drive Unit	Treble 2" Bass 5"
	Sensitivity (1m, 1W)	90±2dB
	Max. SPL (1 m)	104±3dB
	Frequency Response	105Hz-20kHz
	Rated Power (RMS)	30W
Power Supply		AC220V/50Hz
Package Size (W×D×H mm)		450×365×280mm
Product Size (W×D×H mm)		292×212×165mm
Gross Weight		7.1kg (2PCS)
Net Weight		2.8kg

Front / Rear Panel



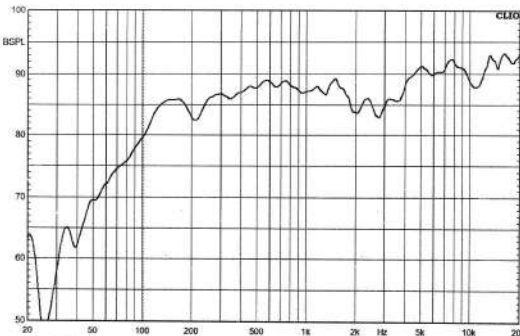
Rear Panel

1 Master Speaker Wiring Port

Connect the master speaker with a power cable.

Product Information

Frequency Response (dB SPL, 1W, 1m)



Distortion (THD< 3% 1W, 1m, 120Hz-16kHz)

